

NUMBERING HEADS



PRODUCT FEATURES

- Hand-held for low volume manual marking onto flat surfaces of parts
- Non-automatic for press marking flat surfaces
- Straight automatic for press marking flat surfaces of parts
- Straight automatic for roll marking around the diameter of round parts
- Barrel style automatic for roll marking flat surfaces of parts
- Combination straight & barrel automatic with interchangeable typeholders for press and roll marking
- Straight automatic & non-automatic for hot stamping of flat plastic surfaces
- Embossing heads

For every serial and sequential application, Schmidt has your number.

Schmidt's automatic numbering heads can be used in a variety of press marking or roll marking machines where a consecutive serial number is required.

Our Model 10 numbering heads are the industry standard for automatic numbering. Standard Model 10 numbering heads are available with 5-7 wheels and 3/32" - 1/8" character sizes. A wide range of wheel configurations and character sizes are also available on a made to order basis.

For infrequent or low-volume numbering applications, a hand-style head provides quality and consistent impressions. Schmidt Repeat-O-Heads are economical and work on all types of metal products. A single locking pin holds the wheels in place to maintain stamping alignment even under heavy impact. Standard heads have 4-7 wheels and 3/32" - 1/8" character sizes.



Hand-Style Repeat-O-Head

At Schmidt, we specialize in providing marking solutions to satisfy your specific application requirements. This includes custom engineered barrel style automatic numbering heads, combination numbering heads and typeholders, and a wide array of numbering head configurations to solve your most difficult sequential numbering challenges.

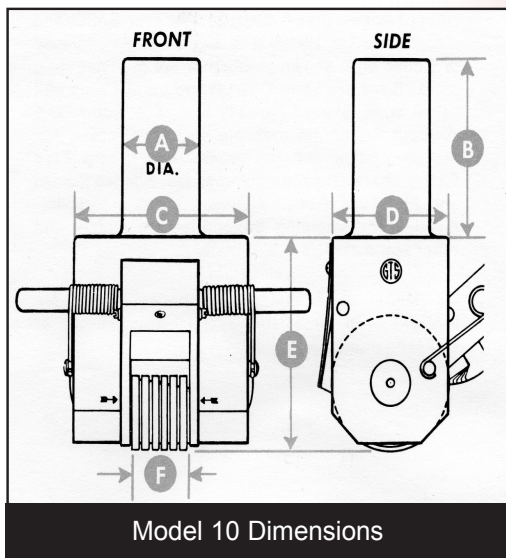
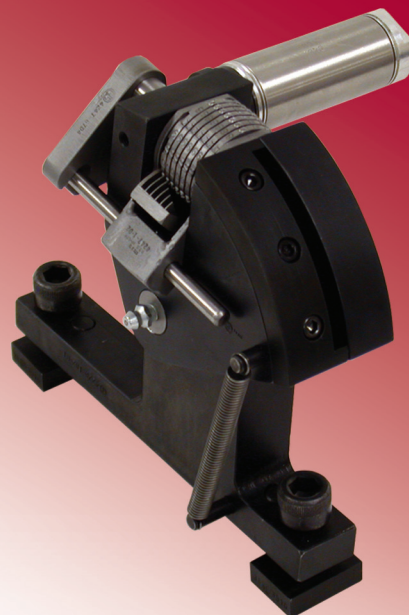


SCHMIDT
MARKING SYSTEMS

(800) 323-1332 • (847) 647-7117

www.gtschmidt.com

The combination barrel style numbering head and typeholder, illustrated on the right, demonstrates Schmidt's broad range of capabilities to design and build numbering heads to meet your specific requirements.



Specification Chart

Character Size	1/16"			3/32"			1/8"			3/16"			1/4"		
Min. Stroke Req.	1"			1"			1"			2"			2"		
No. of Wheels	5	6	7	5	6	7	5	6	7	5	6	7	5	6	7
Dimension A	1"	1"	1"	1"	1"	1"	1"	1"	1"	1"	1"	1"	1.562"	1.562"	1.562"
Dimension B	2"	2"	2"	2"	2"	2"	2"	2"	2"	2"	2"	2"	2.25"	2.25"	2.25"
Dimension C	1.093"	1.093"	1.093"	1.093"	1.093"	2.437"	2.437"	2.437"	2.437"	3"	3"	3"	3"	3.25"	3.5"
Dimension D	1.468"	1.468"	1.468"	1.468"	1.468"	1.468"	1.468"	1.468"	1.468"	1.75"	1.75"	1.75"	2"	2"	2"
Dimension E	2.375"	2.375"	2.375"	2.375"	2.375"	2.375"	2.375"	2.375"	2.375"	2.812"	2.812"	2.812"	3.031"	3.031"	3.031"
Dimension F	.425"	.515"	.605"	.525"	.635"	.745"	.650"	.785"	.920"	.915"	1.105"	1.295"	1.199"	1.445"	1.691"

Subject to alterations to accommodate technical developments.



6151 W. Howard Street
 Niles, IL 60714-3488
 (800) 323-1332
 (847) 647-7117
 Fax (847) 647-7593

ISO 9001: 2000

