

STYLINER[®] Mark3



FEATURES & ACCESSORIES

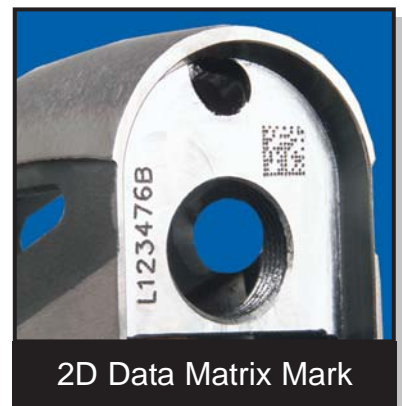
- 3" x 2" and 4" x 4" marking fields
- Optional powered & programmable z-axis
- 2D data matrix & barcode reading and verifying
- 5-C collet & 3 jaw chuck rotary indexers
- Scanners & cameras
- Nameplate shuttle feed systems
- Mark flat, curved, convex, concave, irregular and delicate surfaces
- X-Y tables
- Light curtains and sound enclosures
- Electric version available, no air required
- 30-month standard warranty
- Technical support 24 hours, 7 days a week

STYLINER[®] Mark3 is a durable and extremely precise stand alone column mounted dot peen marking system.

The Mark3 marking system is specifically designed to accommodate a variety of materials and part sizes. It is capable of marking flat, curved, convex, or concave parts, as well as, irregular and delicate surfaces.

The STYLINER[®]Mark3 is fully programmable with a wide range of capabilities. It can function as a semi-automatic, where each part is hand placed in the marking field or fixture before it is marked, or it can be fully automated with a part feeding system, allowing the operator to walk away.

Schmidt's Styliner Marking Systems can apply 2D data matrix, automatic date codes, sequential serial numbers, logos, or any identification mark on your parts, sub-assemblies and finished products in accordance with ISO certification guidelines. The dot peen marking speed can be increased for high productivity marking, or reduced for a fine quality continuous line appearance, suitable for finished parts.



2D Data Matrix Mark



SCHMIDT
MARKING SYSTEMS

(800) 323-1332 • (847) 647-7117

www.gtschmidt.com

The **STYLINER® Mark3** is also available as a separate marking head that can be mounted or integrated into your manufacturing operation. Styliner "S" (separate) marking heads can be positioned vertically, horizontally or inverted to mark any compound angle as required by the application and are available in a wide range of tool envelope sizes. For more information, please visit our automation site at www.automatedmarking.net



STANDARD SYSTEM

Electrical Service:	110VAC	Marking Z-Axis:	Manual operation with hand wheel
Pneumatic Service:	85 PSI, 2-3 SCFM ave.	Actuation:	Keyboard, custom signal or foot switch
Dimensions:	12"W x 16.5"D x 28"H	Character Size:	Variable from .020" to marking field limit
Shipping Weight:	60 lbs.	Marking:	Variable speed and marking depth, application dependent
Die Space:	8" inches	Warranty:	30 months
Working Field:	3" x 2" and 4" x 4"		
Marking Types:	Pneumatic & electric		

SOFTWARE

- Import AutoCad images
Scale, rotate and position as required
- Creates bar codes, automatic date/time stamping
- Allows true radial marking
- Infinite ascending/descending increments for serial marking
- Works with most data interfaces: data files, serial ports, multiple routine and variable search tables, vision reading systems
- Save different part numbers in files for quick recall and for ISO traceability
- Full password security

OPTIONS

- Vision systems
- Powered z-axis
- Bar code scanner
- Nameplate shuttle feed
- Nameplate holding clamp
- Custom parts fixture
- Rotary fixture
- Custom software interface



6151 W. Howard Street
Niles, IL 60714-3488
(800) 323-1332
(847) 647-7117
Fax (847) 647-7593

www.gtschmidt.com

ISO 9001:2000



STYLINER is a registered trademark of Geo. T. Schmidt, Inc.

© 2004, Geo. T. Schmidt, Inc