

# NUMBERING HEADS



## PRODUCT FEATURES

- Hand-held for low volume manual marking onto flat surfaces of parts
- Non-automatic for press marking flat surfaces
- Straight automatic for press marking flat surfaces of parts
- Straight automatic for roll marking around the diameter of round parts
- Barrel style automatic for roll marking flat surfaces of parts
- Combination straight & barrel automatic with interchangeable typeholders for press and roll marking
- Straight automatic & non-automatic for hot stamping of flat plastic surfaces
- Embossing heads

## For every serial and sequential application, Schmidt has your number.

Schmidt's automatic numbering heads can be used in a variety of press marking or roll marking machines where a consecutive serial number is required.

Our Model 10 numbering heads are the industry standard for automatic numbering. Standard Model 10 numbering heads are available with 5-7 wheels and 3/32" - 1/8" character sizes. A wide range of wheel configurations and character sizes are also available on a made to order basis.

For infrequent or low-volume numbering applications, a hand-style head provides quality and consistent impressions. Schmidt Repeat-O-Heads are economical and work on all types of metal products. A single locking pin holds the wheels in place to maintain stamping alignment even under heavy impact. Standard heads have 4-7 wheels and 3/32" - 1/8" character sizes.



Hand-Style Repeat-O-Head

At Schmidt, we specialize in providing marking solutions to satisfy your specific application requirements. This includes custom engineered barrel style automatic numbering heads, combination numbering heads and typeholders, and a wide array of numbering head configurations to solve your most difficult sequential numbering challenges.

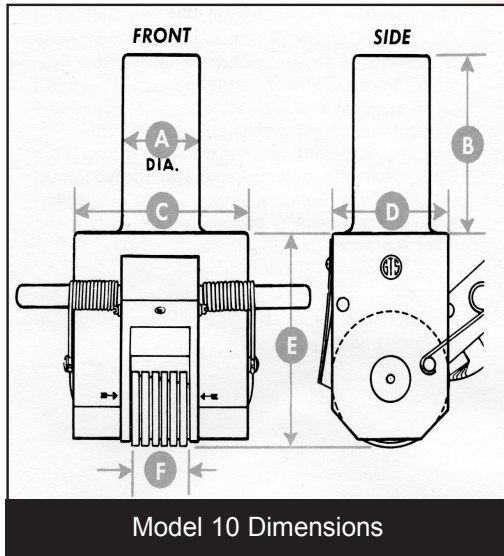
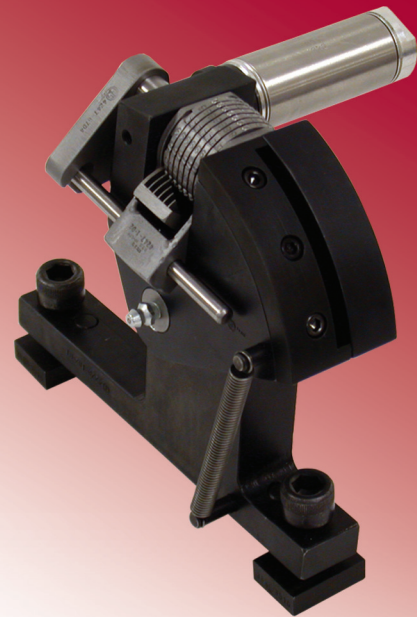


**SCHMIDT**  
MARKING SYSTEMS

(800) 323-1332 • (847) 647-7117

[www.gtschmidt.com](http://www.gtschmidt.com)

The combination barrel style numbering head and typeholder, illustrated on the right, demonstrates Schmidt's broad range of capabilities to design and build numbering heads to meet your specific requirements.



### Specification Chart

Character Size	1/16"			3/32"			1/8"			3/16"			1/4"		
Min. Stroke Req.	1"			1"			1"			2"			2"		
No. of Wheels	<u>5</u>	<u>6</u>	<u>7</u>	<u>5</u>	<u>6</u>	<u>7</u>	<u>5</u>	<u>6</u>	<u>7</u>	<u>5</u>	<u>6</u>	<u>7</u>	<u>5</u>	<u>6</u>	<u>7</u>
Dimension A	1"	1"	1"	1"	1"	1"	1"	1"	1"	1"	1"	1"	1.562"	1.562"	1.562"
Dimension B	2"	2"	2"	2"	2"	2"	2"	2"	2"	2"	2"	2"	2.25"	2.25"	2.25"
Dimension C	1.093"	1.093"	1.093"	1.093"	1.093"	2.437"	2.437"	2.437"	2.437"	3"	3"	3"	3"	3.25"	3.5"
Dimension D	1.468"	1.468"	1.468"	1.468"	1.468"	1.468"	1.468"	1.468"	1.468"	1.75"	1.75"	1.75"	2"	2"	2"
Dimension E	2.375"	2.375"	2.375"	2.375"	2.375"	2.375"	2.375"	2.375"	2.375"	2.812"	2.812"	2.812"	3.031"	3.031"	3.031"
Dimension F	.425"	.515"	.605"	.525"	.635"	.745"	.650"	.785"	.920"	.915"	1.105"	1.295"	1.199"	1.445"	1.691"

Subject to alterations to accommodate technical developments.



**SCHMIDT**  
MARKING SYSTEMS

6151 W. Howard Street  
Niles, IL 60714-3488  
(800) 323-1332  
(847) 647-7117  
Fax (847) 647-7593

ISO 9001: 2000

