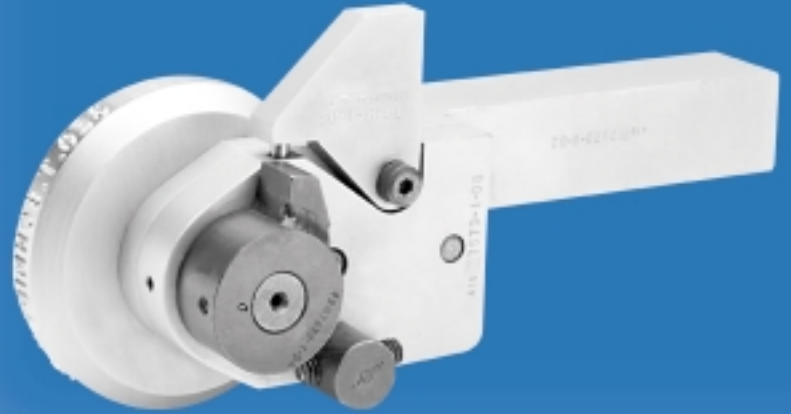


# LETTERING KNURL HOLDERS

FOR LATHES & SCREW MACHINES



## PRODUCT OVERVIEW

- *In-line operation allows for efficient marking during primary operations.*
- *Completely eliminates need for marking as a secondary operation.*
- *Ideal for fittings, couplings, nozzles, collars and many other parts turned in a lathe, screw machine, multiple spindle or chucking machine.*
- *Types available: spring return with locking feature, simple spring return and free running.*
- *Free running holder designed for multiple revolution marking and knurling.*

### *Efficient and cost-effective lettering knurl holders ideal for lathes and screw machines*

*Eliminate the need for a secondary marking process by using Schmidt knurl holders! Custom made with shank or block bodies, Schmidt knurl holders work in-line with your primary manufacturing process. Long lasting and well-built, Schmidt knurl holders are ideal for marking fittings, couplings, nozzles, collars and many other parts that are turned in a lathe, screw machine, multiple spindle or chucking machine. With no secondary processing required, Schmidt knurl holders are your best value!*

**Schmidt's Exclusive Cam Lock Design.** Schmidt spring-return holders feature an exclusive cam lock design. In the process of marking, when the engraved lettering tool has rolled beyond the lettering and cleared the area on the periphery, the shaft of the holder locks to prevent the tool from returning to the start position. This prevents burnishing of the piece part and reduces wear on the engraved tool. When the tool is withdrawn by slide action or hand wheel, the trigger mechanism strikes a trip to release the cam lock permitting the lettering tool to spring back into the start position.

Simple and trouble-free, the Schmidt cam lock holder has few parts subject to wear, and the locking feature is internal. The starting point of the knurl can be adjusted by a conveniently located set screw. Removal of the shaft and lettering tool can be accomplished by removal of a single cap screw on the outside cover.



**SCHMIDT**

SERVING YOUR MARKING NEEDS SINCE 1895

(800) 323-1332 • (847) 647-7117

[www.gtschmidt.com](http://www.gtschmidt.com)

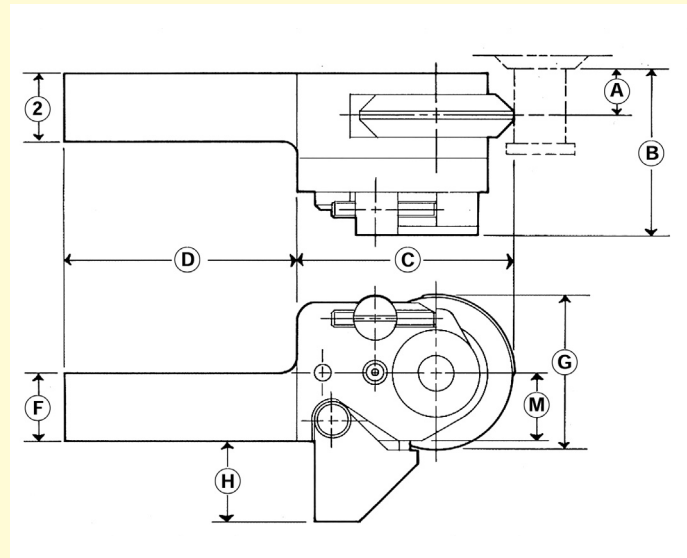
## Customization is a standard feature

Schmidt engineers don't design their knurl holders by product type, they do it by application. In other words, everything we do at Schmidt is a custom design to fit your specific lathe, screw or chucking machine, or other application. Follow the guide below when customizing your next Schmidt knurl holder.



### To ensure we understand your specific application, your request for quotation should include the following information:

1. Machine in which holder is to be used, including the make, model, serial number or year of manufacture.
2. Position or slide in which holder will be mounted.
3. Direction of stock rotation when facing chuck or collet; clockwise (left hand) or counter-clock-wise (right hand).
4. "A" dimension: center line of marking to face of chuck or collet (standard is d").
5. "B" dimension: overall width of body (standard is 2-s").
6. "C" dimension: overall length of body to face of engraved knurl (standard is 3-8").
7. If shank style holder is desired, give dimensions for D, E, and F.
8. "G" dimension: lettering knurl diameter (standard is 2-4"). Also indicate whether top or bottom of characters are toward chuck.
9. "M" dimension: center of knurl to bottom of shank.
10. Sample of piece part or schematic drawing including location of marking, diameter and material.
11. Exact lettering layout, character sizes and desired depth.



### Schmidt Quality

Producing lettering tools for marking collars and other turned parts demands a high degree of skill and specialized knowledge of engraving, gained only from experience. With more than one hundred years experience, you can count on Schmidt for engineering excellence and exceptional product quality. Be sure you specify Geo. T. Schmidt on your next engraved tool order.



Schmidt Marking Systems  
6151 W. Howard Street  
Niles, IL 60714-3488  
tel: (847) 647-7117  
fax: (847) 647-7117

